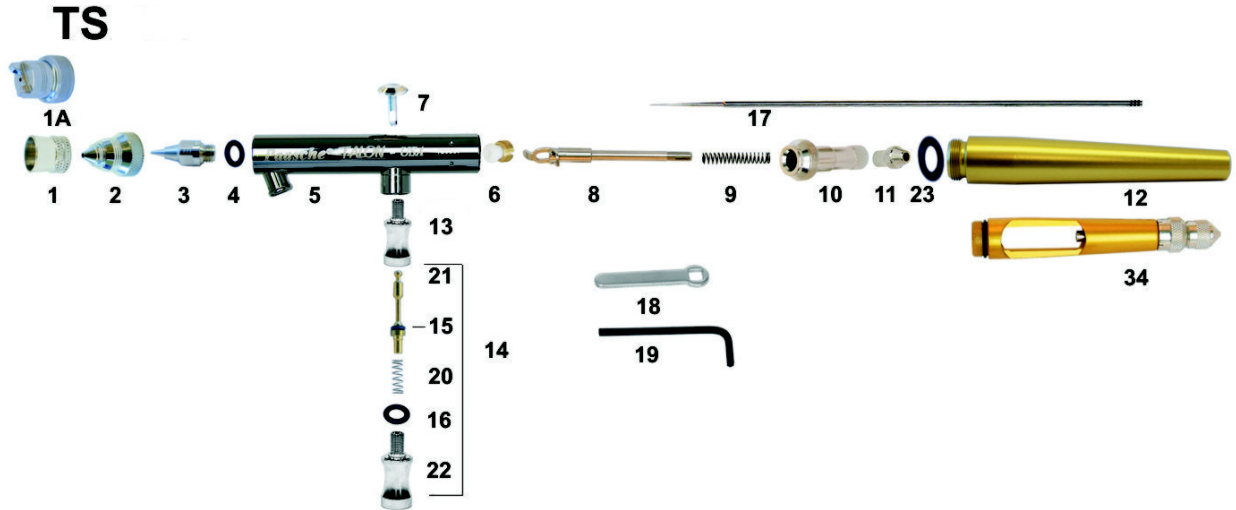


Paasche Talon TS#3L Airbrush

Siphon Feed Dual Action

Illustrated Parts Listing

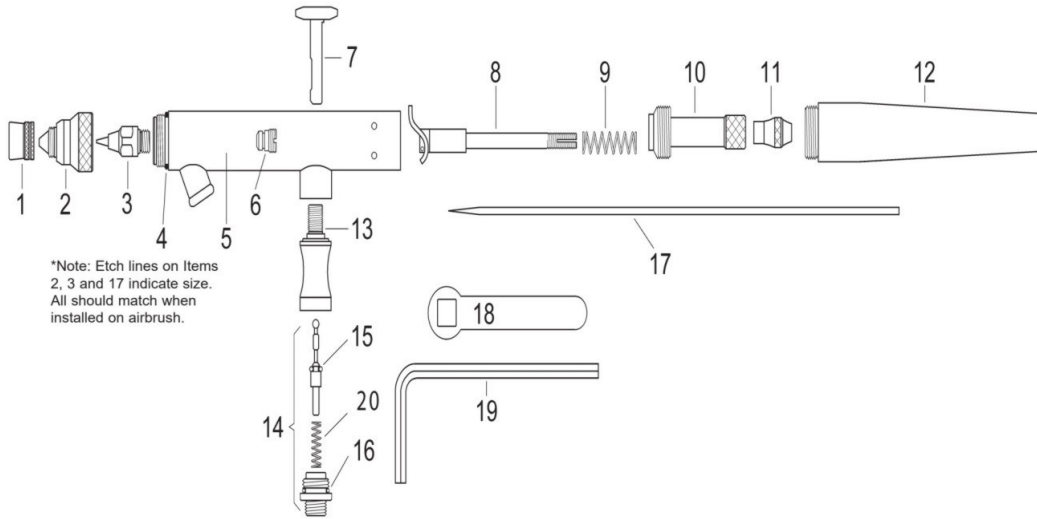


Item #	Part No.	Description
1	XI-41	Needle Protecting Cap
2	TA-3	Air Cap 2 (0.66 mm)
3	TT-3	Tip #2 (0.66mm)
4	MIL-12	O-ring
5	TS-30	TG Shell Assemble N/A
6	TAL-8	Packing Assembly
7	TAL-37	Trigger
8	TAL-18	Rocker Assembly
9	MIL-11	Needle Spring
10	TAL-17	Spring Housing
11	TAL-19	Needle Lock Nut
12	TS-33	Handle
13	TAL-14	Valve Casing
14	TAL-32	Air Valve Assembly
		Parts TAL-32, A-53, TAL-22, TAL-36, A-22, TAL-15
	A-53	O-ring (Pk of 6)
16	TAL-22	O-ring (Pk of 6)
17	TN-3	Needle #3 (0.66mm)
20	A-22	Spring
21	TAL-36	Valve Plunger w/O-ring
22	TAL-15	Valve Adapter w/O-ring
23	MIL-12	O-Ring
		Optional
18	TAL-35	Allen Wrench
19	TAL-28	Wrench
24	TAL-34	Handel w/ Needle Stop
N/S	TS-10RK	Repair Kit (TAL-37, TAL-8, TAL-26, TAL-18, TAL-32, MIL-11, TAL-17, TAL-19 and TAL-23)
N/S	T-227-3	Tip, Head and Needle #3 (0.66 mm)
N/S	VL1/4oz	1/4 oz Color Cup
N/S	HVL1/4	1/4 oz Color Cup Cover
N/S	<u>Uses VL Friction Held Bottle Assembles</u>	
		Also Available
1A	TAF-3	Fan Cap for (0.66 mm) Use with TT3. TN3

Item #	Part No.	Description
1A	TAF-4	Fan Cap for (1.00 mm) Use with TT4. TN4
2	TA-1	Air Cap #1 (0.25mm)
2	TA-2	Air Cap #3 (0.38mm)
2	TA-4	Air Cap #4 (1.00mm)
3	TT-1	Tip #1 (0.25 mm)
3	TT-2	Tip #3 (0.38 mm)
3	TT-4	Tip #4 (1.00 mm)
24	TN-1	Needle #1 (0.25 mm)
24	TN-2	Needle #3 (0.38 mm)
24	TN-4	Needle #4 (1.00mm)
N/S	T-227-1	Tip, Head and Needle #1 (0.25 mm)
N/S	T-227-2	Tip, Head and Needle #2 (0.38 mm)
N/S	T-227-4	Tip, Head and Needle #4 (1.00 mm)
		To Change TS#3 to TS#1 change the following Parts for Optimum Performance:
2	TA-1	Air Cap #1 (0.25 mm)
3	TT-1	Tip #0 (0.25 mm)
24	TN-1	Needle #0 (0.25 mm) OR
N/S	T-227-1	Air Cap, Tip and Needle #1 (0.25 mm)
		To Change TS#3 to TS#2 change the following Parts for Optimum Performance:
2	TA-2	Air Cap #2 (0.38 mm)
3	TT-2	Tip #2 (0.38 mm)
24	TN-2	Needle #2 (0.38 mm) OR
N/S	T-227-2	Air Cap, Tip and Needle #2 (0.38 mm)
		To Change TS#3 to TS#4 change the following Parts for Optimum Performance:
2	TA-4	Air Cap #4 (1.00 mm)
3	TT-4	Tip #4 (1.00 mm)
24	TN-4	Needle #4 (1.00 mm) OR
N/S	T-227-4	Air Cap, Tip and Needle #4 (1.00 mm)

See next Page for schematic

TS



*Note: Etch lines on Items 2, 3 and 17 indicate size. All should match when installed on airbrush.

NO.	PART	DESCRIPTION
1.	XI-41	Needle Protection Cap
*2.	TA-3	Aircap (.66mm)
*3.	TT-3	Tip (.66mm)
4.	MIL-12	"O" Ring
5.	TS-30	Shell Assembly
6.	TAL-8	Packing Assembly PTFE
7.	TAL-37	Trigger
8.	TAL-18	Rocker Assembly
9.	MIL-11	Needle Spring
10.	TAL-17	Spring Housing
11.	TAL-19	Needle Lock Nut
12.	TS-33	Handle
13.	TAL-14	Valve Casing
14.	TAL-32	Air Valve Assembly
15.	A-53	"O" Ring
16.	TAL-22	"O" Ring
*17.	TN-3	Needle (.66mm)
18.	TAL-28	Wrench
19.	TAL-35	Allen Wrench
20.	A-22	Spring

Optional Parts:

Head components:

TAF-3	Fan Aircap for .66mm Head- (use with TT-3 & TN-3)
TT-1, 2 or 4	Tip (.25mm .38mm 1mm)
TN-1, 2 or 4	Needle (.25mm & .38mm)
TA-1, 2 or 4	Aircap (.25mm & .38mm)
TAL-34	Handle with Needle Stop

Complete Head

T-227-1	Size 1 Head (.25mm)
T-227-2	Size 2 Head (.38mm)
T-227-3	Size 3 Head (.66mm)
T-227-4	Size 4 Head (1mm)

Airhoses with Couplings

A-1/8-size	Braided Airhose (6', 8', 10', 15', 20', 25' & 50')
HPB-1/8-10	10' Black Plastic Airhose

WARNING: Spray materials may be harmful if inhaled or allowed to come into contact with the skin or eyes. Consult the product label and material safety data sheet supplied for the spray material. Follow all safety precautions. **CAUTION:** Well Ventilated Area Required to remove fumes, dust or overspray. **Maximum Air Pressure 75 P.S.I.**

Paasche Airbrush Co. 9511 58th Place Kenosha, WI. 53144 Phone:773/867-9191 Email:info@paascheairbrush.com

Available from: *Dixie Art Airbrush* • www.dixieart.com • 800.783.2612 / 504.466.6556