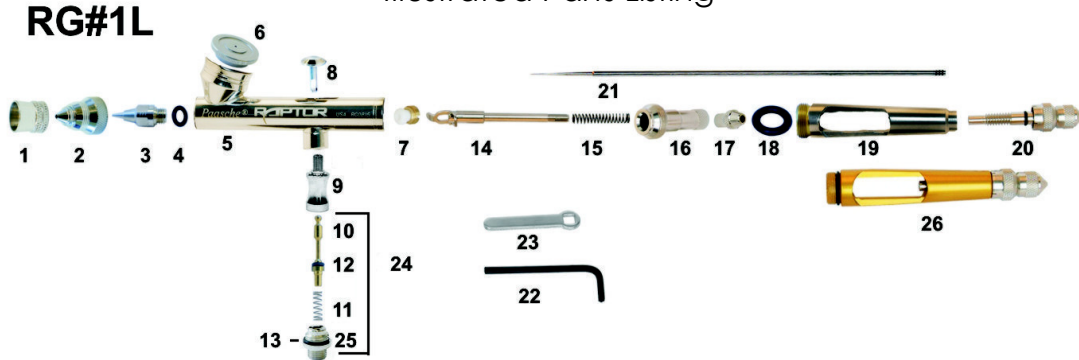


## Paasche Raptor RG#1L Airbrush Gravity Feed Dual Action

### Illustrated Parts Listing



Item #	Part No.	Description
1	XI-41	Needle Protecting Cap
2	TA-1	Air Cap 2 (0.25mm)
3	TT-1	Tip #1 (0.25mm)
4	MIL-12	O-ring
5	RG-30	RG Shell Assemble N/A
6	RG-8	Cup Cover
7	TAL-8	Packing Assembly PTFE
8	TAL-37	Trigger
9	TAL-14	Valve Casing
10	TAL-36	Valve Plunger w/O-ring
11	A-22	Spring
12	TAL-26	O-ring
13	TAL-22	O-ring (Pk of 6)
14	TAL-18	Rocker Assembly
15	MIL-11	Needle Spring
16	TAL-17	Spring Housing
17	TAL-19	Needle Lock Nut
18	MIL-12	O-Ring
19	RG-20	Handle
20	TAL-33	Needle Stop
21	TN-1	Needle #1 (0.25mm)
24	TAL-32	Air Valve Assemble
25	TAL-15	Valve Adapter w/O-ring
<b>Optional</b>		
22	TAL-35	Allen Wrench
23	TAL-28	Wrench
26	TAL-34	Handle w/Needle Stop
N/S	T-227-1	Tip, Head and Needle #2 (0.38 mm)

Item #	Part No.	Description
24	TN-0	Needle #0 (0.20 mm)
24	TN-2	Needle #2 (0.38 mm)
24	TN-3	Needle #3 (0.66 mm)
24	TN-4	Needle #4 (1.00mm)
N/S	T-227-0	Tip, Head and Needle #0 (0.20 mm)
N/S	T-227-2	Tip, Head and Needle #2 (0.38 mm)
N/S	T-227-3	Tip, Head and Needle #3 (0.66 mm)
N/S	T-227-4	Tip, Head and Needle #4 (1.00 mm)

To Change RG#1 to RG#0 change the following Parts for Optimum Performance:

2	TA-1	Air Cap #1 (0.25 mm)
3	TT-0	Tip #0 (0.2 mm)
24	TN-0	Needle #0 (0.2 mm) OR
N/S	T-227-0	Air Cap, Tip and Needle #0 (0.20 mm)

To Change RG#1 to RG#2 change the following Parts for Optimum Performance:

2	TA-2	Air Cap #1 (0.38 mm)
3	TT-2	Tip #0 (0.38 mm)
24	TN-2	Needle #0 (38mm) OR
N/S	T-227-2	Air Cap, Tip and Needle #1 (0.38 mm)

To Change RG#1 to RG#3 change the following Parts for Optimum Performance:

2	TA-3	Air Cap #3 (0.66 mm)
3	TT-3	Tip #3 (0.66 mm)
24	TN-3	Needle #3 (0.66 mm) OR
N/S	T-227-3	Air Cap, Tip and Needle #3 (0.66 mm)

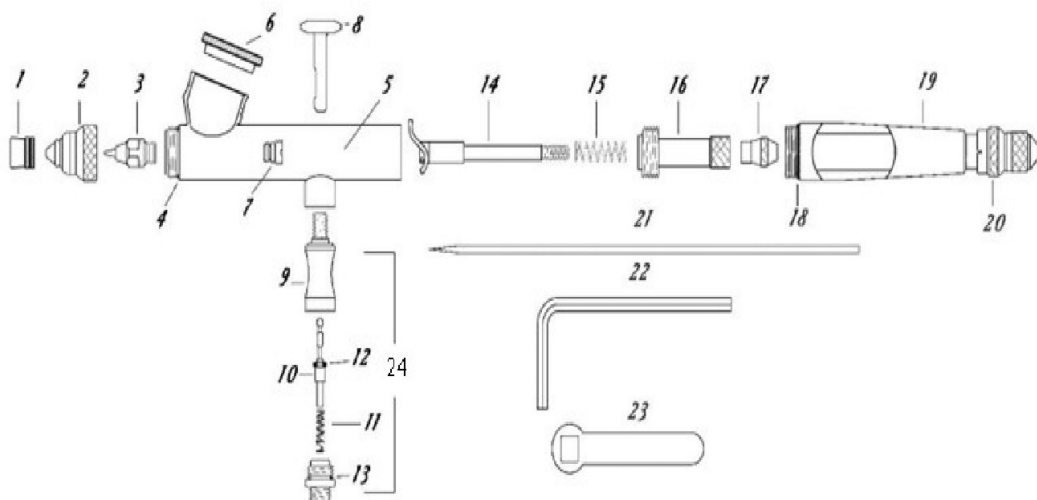
To Change RG#1 to RG#4 change the following Parts for Optimum Performance:

2	TA-4	Air Cap #4 (1.00 mm)
3	TT-4	Tip #4 (1.00 mm)
24	TN#4	Needle #4 (1.00 mm) OR
N/S	T-227-4	Air Cap, Tip and Needle #4 (1.00 mm)

<b>Also Available</b>		
2A	TAF-3	Fan Cap for (0.66 mm) use with TT3, TN3
2A	TAF-4	Fan Cap for (1.00mm) use with TT4, TN4
2	TA-2	Air Cap #2 (0.38mm)
2	TA-3	Air Cap #3 (0.66mm)
2	TA-4	Air Cap #4 (1.00mm)
3	TT-0	Tip #0 (0.20 mm)
3	TT-2	Tip #2 (0.38 mm)
3	TT-3	Tip #3 (0.66 mm)
3	TT-4	Tip #4 (1.00 mm)

**See next Page for schematic**

# RG#1L



NO.	PART	DESCRIPTION
1.	XI-41	Needle Protection Cap
2.	TA-1	Aircap (.25mm)
3.	TT-1	Tip (.25mm)
4.	MIL-12	"O" Ring
5.	RG-30	Shell Assembly
6.	RG-8	Cover
7.	TAL-8	Packing Assembly PTFE
8.	TAL-37	Trigger
9.	TAL-14	Valve Casing
10.	TAL-36	Plunger
11.	A-22	Spring
12.	TAL-26	"O" Ring
13.	TAL-22	"O" Ring
14.	TAL-18	Rocker Assembly
15.	MIL-11	Needle Spring
16.	TAL-17	Spring Housing
17.	TAL-19	Needle Lock Nut
18.	MIL-12	"O" Ring
19.	RG-20	Handle
20.	TAL-33	Needle Stop
21.	TN-1	Needle (.25mm)
22.	TAL-35	Allen Wrench
23.	TAL-28	Wrench
24.	TAL-32	Air Valve Assembly

### Optional Parts:

#### Head components:

TAF-3	Fan Aircap for .66mm (use with TT-3 & TN-3)
TT-2, 3 or 4	Tip (.38, .66 or 1mm)
TN-2, 3 or 4	Needle (.38, .66 or 1mm)
TA-2, 3 or 4	Aircap (.38, .66 or 1mm)

#### Complete Head

T-227-1	Size 1 Head (.25mm)
T-227-2	Size 2 Head (.38mm)
T-227-3	Size 3 Head (.66mm)
T-227-4	Size 4 Head (1mm)

#### Parts:

3A-4	Hose "O" Ring
TAL-34	Handle with Needle Stop

#### Air Hoses with INSTALLED COUPLINGS

A-1/8-size	Braided Airhose (6', 8', 10', 15', 20', 25' & 50')
HPB-1/8-10	10' Black Plastic Airhose

**WARNING:** Spray materials may be harmful if inhaled or allowed to come into contact with the skin or eyes. Consult the product label and material safety data sheet supplied for the spray material. Follow all safety precautions. **CAUTION:** Well Ventilated Area Required to remove fumes, dust or overspray. **Maximum Air Pressure 75 P.S.I.**

Paasche Airbrush Co. 9511 58th Place Kenosha, WI. 53144 Phone:773/867-9191 Email:info@paascheairbrush.com