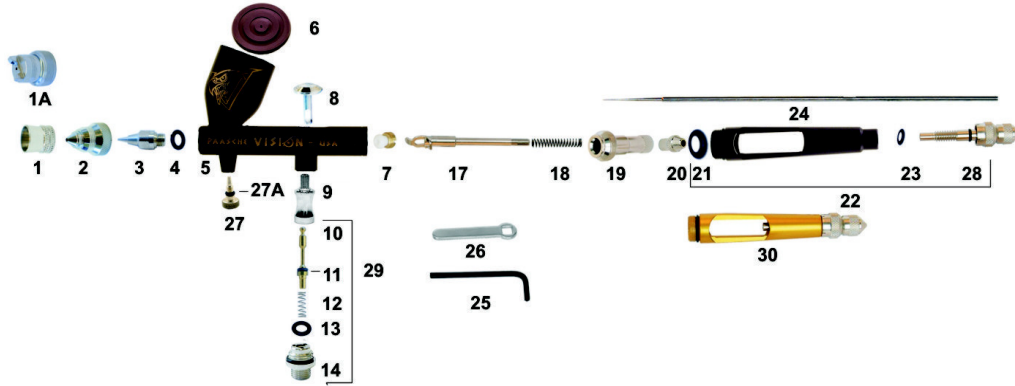


Paasche Talon TGX#0L Airbrush Gravity Feed Dual Action

Illustrated Parts Listing

TGX



Item #	Part No.	Description
1	XI-41	Needle Protecting Cap
2	TA-1	Air Cap #1 (0.25mm)
3	TT-0	Tip #01 ((0.20 mm)
4	MIL-12	O-ring
5	TGX-30	TGX Shell Assemble
6	TGX-104	Cup Cover
7	TAL-8	Packing Assembly PTFE
8	TGX-106	Trigger
9	TAL-14	Valve Casing
10	TAL-36	Valve Plunger w/O-ring
11	A-53	O-ring (Pk of 6)
12	A-22	Spring
13	TAL-22	O-ring (Pk of 6)
14	TAL-15	Valve Adapter w/O-ring
17	TAL-18	Rocker Assembly
18	MIL-11	Needle Spring
19	TAL-17	Spring Housing
20	TAL-19	Needle Lock Nut
21	MIL-12	O-Ring
22	TGX-105	Black Handle w/Needle Stop
23	3A-4	O-ring
24	TN-0	Needle #0 (0.20 mm)
27	TGX-107	Air Valve Stem
27A	3A-4	O-ring pk of 6
28	TAL-33	Needle Stop
29	TAL-32	Air Valve Assemble (Parts TAL-36, A53, A22, TAL-14, TAL-15)

Optional		
25	TAL-35	Allen Wrench
26	TAL-28	Wrench
30	TAL-34	Gold Handle w/Needle Stop
N/S	T-227-0	Tip, Head and Needle #0 (0.20 mm)

Also Available		
1A	TAF-3	Fan Cap for (0.66 mm) Use with TT3. TN3
1A	TAF-4	Fan Cap for (1.00 mm) Use with TT4. TN4
2	TA-2	Air Cap #2 (0.38mm)
2	TA-3	Air Cap #3 (0.66mm)
2	TA-4	Air Cap #1 (1.00mm)

Item #	Part No.	Description
3	TT-1	Tip #1 (0.25 mm)
3	TT-2	Tip #2 (0.38 mm)
3	TT-3	Tip #3 (0.66 mm)
3	TT-4	Tip #4 (1.00 mm)
24	TN-1	Needle #1 (0.25 mm)
24	TN-2	Needle #2 (0.38 mm)
24	TN-3	Needle #3 (0.66 mm)
24	TN-4	Needle #4 (1.00mm)
N/S	T-227-1	Tip, Head and Needle #1 (0.25 mm)
N/S	T-227-2	Tip, Head and Needle #2 (0.38mm)
N/S	T-227-3	Tip, Head and Needle #3 (0.66 mm)
N/S	T-227-4	Tip, Head and Needle #4 (1.00 mm)

To Change TGX#0 to TGX#1 change the following Parts for Optimum Performance:

2	TA-1	Air Cap #1 (0.25 mm)
3	TT-1	Tip #1 (0.25 mm)
24	TN-1	Needle #1 (0.25 mm) OR
N/S	T-227-1	Air Cap, Tip and Needle #1 (0.25 mm)

To Change TGX#0 to TGX#2 change the following Parts for Optimum Performance:

2	TA-2	Air Cap #2 (0.38 mm)
3	TT-2	Tip #2 (0.38 mm)
24	TN-2	Needle #2 (0.38 mm) OR
N/S	T-227-2	Air Cap, Tip and Needle #2 (0.38mm)

To Change TGX#0 to TGX#3 change the following Parts for Optimum Performance:

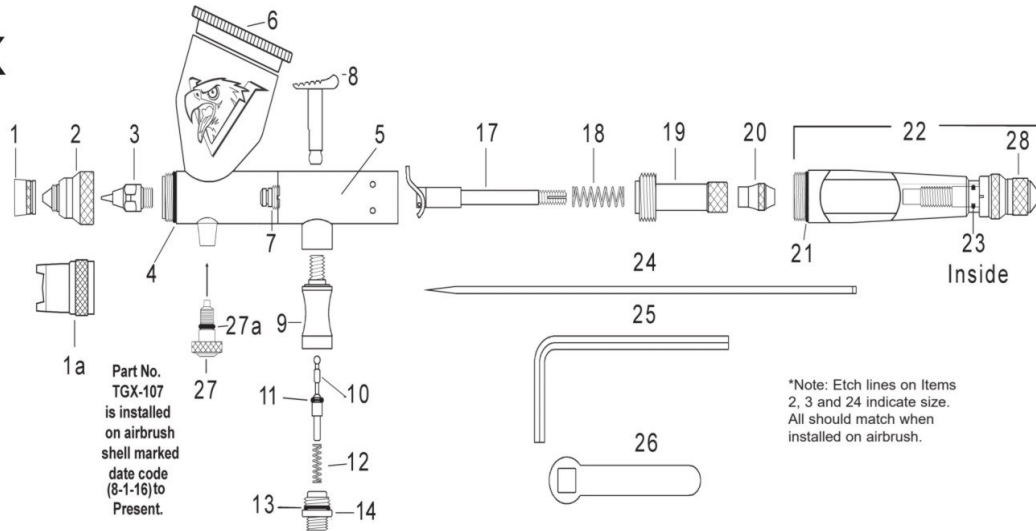
2	TA-3	Air Cap #3 (0.66 mm)
3	TT-3	Tip #3 (0.66 mm)
24	TN-3	Needle #3 (0.66 mm) OR
N/S	T-227-3	Air Cap, Tip and Needle #3 (0.66 mm)

To Change TGX#0 to TGX#4 change the following Parts for Optimum Performance:

2	TA-4	Air Cap #4 (1.00 mm)
3	TT-4	Tip #4 (1.00 mm)
24	TN-4	Needle #4 1.00 mm) OR
N/S	T-227-4	Air Cap, Tip and Needle #4 (1.00 mm)

See next Page for schematic

TGX



NO.	PART	DESCRIPTION
1.	XI-41	Cap
1a.	TAF-3	Fan Aircap for .66mm head
2.	TA-1	.2 & .25 Aircap
3.	TT-0	.2mm Tip
4.	MIL-12	"O" Ring for TGX-30 Shell
5.	TGX-30	Shell Assembly
6.	TGX-104	Cup Cover
7.	TAL-8	Packing Assembly PTFE
8.	TGX-106	Trigger
9.	TAL-14	Valve Casing (Not Black Chrome)
10.	TAL-36	Air Valve Plunger (Includes O-ring)
11.	A-53	O-ring (Pack of (6) O-rings)
12.	A-22	Spring
13.	TAL-22	O-Ring (Pack of (6) O-rings)
14.	TAL-15	Valve Adapter (Includes O-ring)
17.	TAL-18	Rocker Assembly
18.	MIL-11	Needle Spring
19.	TAL-17	Spring Housing
20.	TAL-19	Needle Lock Nut
21.	MIL-12	"O" Ring for Handle
22.	TGX-105	Handle & Needle Stop
23.	3A-4	"O" ring
24.	TN-0	.2mm Needle
25.	TAL-35	Allen Wrench
26.	TAL-28	Wrench
27.	TGX-102	Air Valve Stem(Date on shell 7/31/16)
27a	3A-5	O-ring (Pack of 6) TGX-102(Old)
27.	TGX-107	Air Valve Stem (Date on shell 8/1/16)
27a	3A-4	O-ring (Pack of 6) TGX-107(Current)
28.	TAL-33	Needle Stop

Optional Parts:

Head components:

TAF-3	Fan Aircap for .66mm Head (use with TT-3 & TN-3)
TT-1, 2, 3 or 4	Tip (.25, .38, .66 or 1mm)
TN-1, 2, 3 or 4	Needle (.25, .38, .66 or 1mm)
TA-1, 2, 3 or 4	Aircap (.25, .38, .66 or 1mm)

Complete Head

T-227-1	Size 1 Head (.25mm)
T-227-2	Size 2 Head (.38mm)
T-227-3	Size 3 Head (.66mm)
T-227-4	Size 4 Head (1mm)

Parts:

TAL-34	Handle with Needle Stop
--------	-------------------------

Airhoses with couplings

A-1/8-size	Braided Airhose (6', 8', 10', 15', 20', 25' & 50')
HPB-1/8-10	10' Black Plastic Airhose

WARNING: Spray materials may be harmful if inhaled or allowed to come into contact with the skin or eyes. Consult the product label and material safety data sheet supplied for the spray material. Follow all safety precautions. **CAUTION:** Well Ventilated Area Required to remove fumes, dust or overspray. **Maximum Air Pressure 75 P.S.I.**

Paasche Airbrush Co. 9511 58th Place Kenosha, WI. 53144 Phone:773/867-9191 Email:info@paascheairbrush.com

Available from: *Dixie Art Airbrush* • www.dixieart.com • 800.783.2612 / 504.466.6556