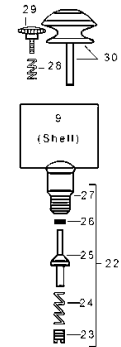


**Old Style Replacement Parts**



**H - AIRBRUSH MODEL REPLACEMENT PARTS**

- | #   | Part No. | Description                        |
|-----|----------|------------------------------------|
| 1.  | HC-1-3,5 | Aircap w/ O-ring (Select Size)     |
| 2.  | 3A-4     | "O" Ring (Pack of 6)               |
| 3.  | H-1,3,5  | Color Adjusting Part (Select Size) |
| 4.  | HT-1,3,5 | Tip (Select Size)                  |
| 5.  | H-185    | Packing                            |
| 6.  | H-184    | Packing Nut                        |
| 7.  | HN-1-3,5 | Needle (Select Size)               |
| 8.  | H-153    | Set Screw                          |
| 9.  | H-150N   | Shell (Includes H-128A)            |
| 10. | H-155    | Finger Button                      |
| 11. | H-143    | Handle (Nylon)                     |
| 12. | HVL-200  | Metal Handle (Aluminum - optional) |
| 14. | H-128A   | Valve Casing                       |
| 15. | H-192A   | Valve Plunger w/ A-53              |
| 16. | A-53     | Valve Washer (Pack of 6)           |
| 17. | A-22     | Valve Spring                       |
| 18. | A-23R    | Air Valve Nut                      |
| 19. | F-186    | Wrench                             |
| 20. | A-34     | Hanger                             |



**H - Old Style Replacement Parts**

- |     |        |                          |
|-----|--------|--------------------------|
| 22. | H-175A | Air Valve Assembly       |
| 23. | A-23R  | Air Valve Nut            |
| 24. | A-22   | Valve Spring             |
| 25. | H-21A  | Valve Plunger            |
| 26. | A-52   | Valve Washer (Pack of 6) |
| 27. | H-128A | Valve Casing             |
| 28. | A-143  | Needle Guide Spring      |
| 29. | H-156  | Stipple Adjuster         |
| 30. | H-157  | Finger Lever Assembly    |



The BA bottle assemblies are a new cover configuration and all use plastic bottle. The 2P and 4P are narrow neck and work with most airbrush paint bottles like Createx and Paasche



A-1/8-4, 6, 8, 10, 15, 20, 25 or 50  
Braided Air Hose with couplings (Select Length)  
(3A-4 -- O-ring for airbrush coupling)

**WARNING:** Spray materials may be harmful if inhaled or allowed to come into contact with the skin or eyes. Consult the product label and Material Safety Data Sheet supplied for the spray material. Follow all safety precautions.  
**CAUTION:** Well Ventilated Area Required to remove fumes, dust or overspray. **Maximum Air Pressure 75 P.S.I.**